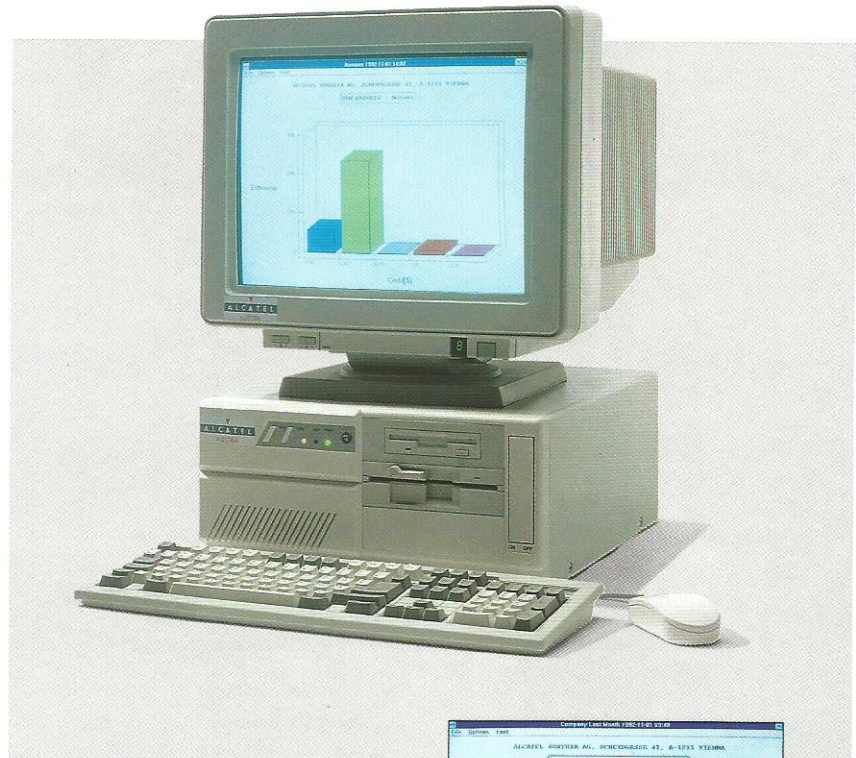


# ALCATEL 4713 The chief Call Accountant

Today more than ever, your company's competitiveness goes hand in hand with strict management. In fact, telecom billing is among the charges that increase regularly from year to year (10% in volume on average per year for European companies). In order to provide your company with the means to control its telecom budget, Alcatel has developed an advanced tool to handle and analyze the telephone and traffic costs : Alcatel 4713, PC-based accounting application. Alcatel 4713 fulfills the requirements of the complete managerial tool. It is ISDN open, competitive, ergonomic and flexible.

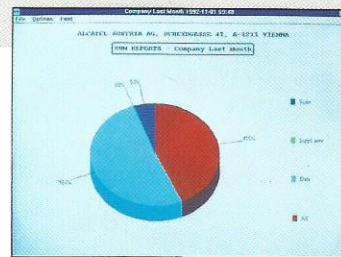


## ISDN network handling\*

Today, companies are entering the ISDN era and gaining access to new services through their telephone system. Alcatel 4713 allows the manager to follow and control this evolution. In fact Alcatel 4713 analyses the traffic costs of the different ISDN services :

- **Voice Service** : Alcatel 4713 allocates the telephone costs on the basis of PTT unit charges (cost subject to change).

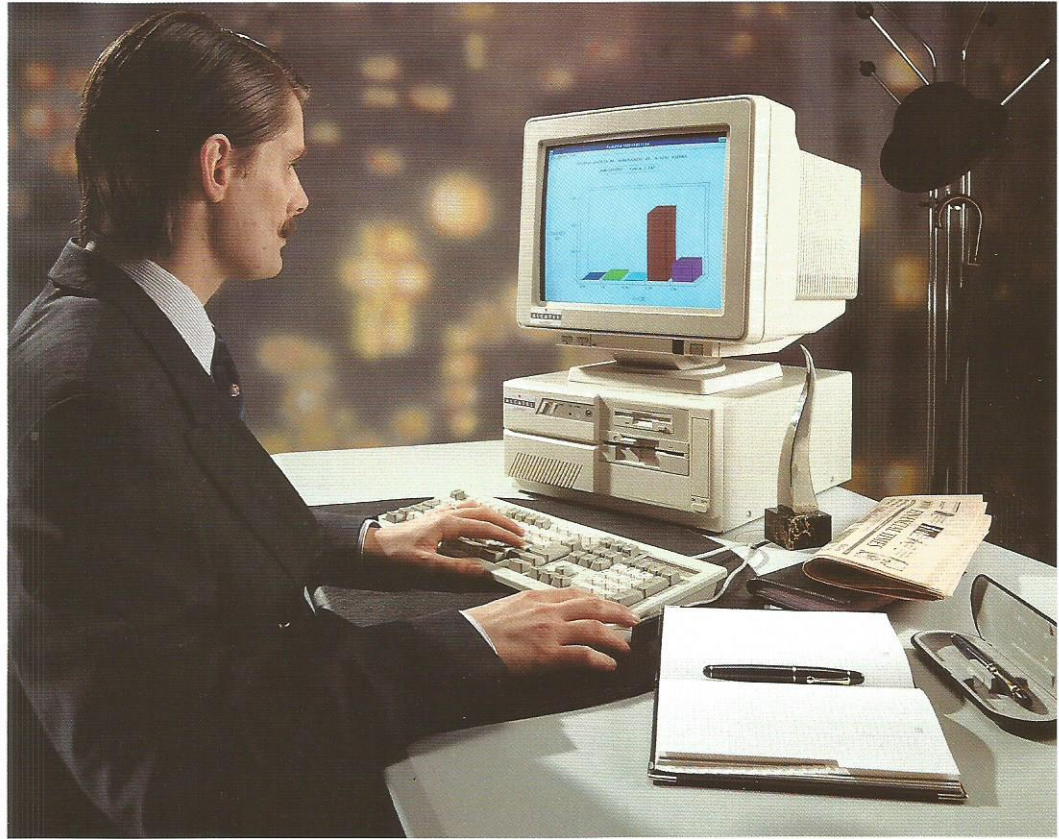
- **Data Service** : When you transfer a file via the ISDN network the bearer service is similar to that of a telephone call but the billing is different. Alcatel 4713 automatically calculates your "data" billing.
- **Supplementary Services** : Alcatel 4713 provides you with a detailed billing of the supplementary services (cost indication, minimessage, national call transfer) used in your company and the related fees.



Graphic presentation.

\* Depending on country.





You now have all the information you need to manage your ISDN\* lines more efficiently and cut costs. And of course there is access to the other Alcatel 4713 services, whether the connection is analog, digital or ISDN.

---

### Customization

Your Alcatel telephone system allows management of access to local, national and international numbers by everyone. Alcatel 4713 has completed and enhanced this service by providing the manager with a

means to control telephone costs by means of predefined reports :

- Sum reports : sum of all telephone costs per department, per service and per extension,
- "Hitlist" from the most extensive user to the least, per extension or per department.

*Alcatel 4713 highlight : histogram.*

Alcatel 4713 allows optimal use of the telephone tool by means of customized use at all levels of the company.

### Establishing cost centres

Alcatel 4713 takes the hierarchical structure of your company into account up to a maximum of 7 levels. It can thus provide monthly or bimonthly printing of call costs per department, cost centre, division for an accurate break-down of telephone costs.

*Alcatel 4713 highlight : Automatic printouts per period.*

Alcatel 4713 enhances analytic accounting with new elements.

\* Depending on country.



## Rebilling

Alcatel 4713 allows printouts of reports per customer account number or business code\* with detailed call slips including the called number, call duration etc.

Type of Call	# Calls	Dur. [sec]	Units	Costs [€]
Voice	1	1:21:46	7	5.60
Transp. serv.	2	0:00:00	1	0.00
Data	1	11:03:08	67	59.60
Bill	6	2:10:18	57	15.00
<b>Sum</b>	<b>10</b>	<b>1:39:06</b>	<b>132</b>	<b>104.90</b>
VAT [19.5%]				19.49
Annual [Incl. VAT]				124.39

Alcatel 4713 "The Chief Call Accountant"

A customer can then be rebilled for the telephone calls related to his project.

## Budget forecasts

Alcatel 4713 allows the establishment of forecast statements about telephone costs by means of sum reports. Alcatel 4713 provides the foundation for long-term management of your telephone costs.

## Telephone traffic observation

Alcatel 4713 has been specially designed for Alcatel telephone systems.

This integration allows optimal management of your PABX. For example, the observation statistics of incoming and outgoing telephone traffic on your outside lines allow a more accurate measurement of your installation in terms of

the flow of calls sent and received.

Traffic observation allows the manager not only to manage the company's telecom costs but to keep track of the development of its telephone system as well.

## Ergonomy : State of the art

Alcatel 4713 offers state of the art performance with an ergonomic user interface :

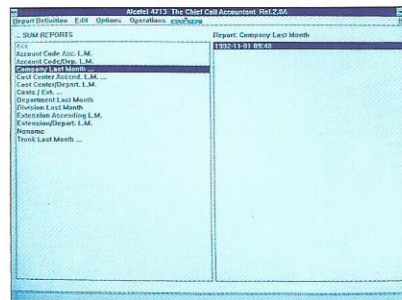
- Multi-Tasking and use of mouse in Windows,
- Graphic presentation with VGA screen
- Customized reports.

With this advanced ergonomy, the user has clear, "ready-to-use" reports.

A customised report with the company heading at a glance.

Moreover, the Alcatel 4713 software can be quickly mastered by those with no knowledge of computers.

All of the Alcatel 4713 tools can be accessed from the main menu.



One, then two consecutive "clicks" with the mouse are all you need to make 25 predefined reports appear on the screen and be printed.



Make things easier with Alcatel 4713 !

\* Depending on PABX.







### Alcatel 4713 main features :

PC 386/PC 486\* compatible software.

User-friendly interface (Windows)\*\*.

ISDN Application\*\*\* : Specific accounting of voice services, supplementary services, data services.

Supports Company structure up to 7 hierarchical levels.

Dynamic menu hierarchy.

"Ready-to-use" reports.

Customised reports.

Telephone cost hitlists.

Business Code Reports.

Annual abbreviated reports.

Scheduling the generating or printing of periodic or deferred reports.

Customized presentation/printing : Headings, Footnotes, character type.

Graphical presentation (histograms, pie).

Traffic observation (incoming and outgoing calls on each line and each extension).

2 options according to needs : "Advanced" and "Comfort".

Security : Access control by password.

Alcatel application.

### Technical characteristics

The Alcatel 4713 accounting software operates on an IBM PC\* compatible micro computer.

Basic configuration :

IBM PC/AT 386 or compatible micro computer.

MS-DOS 3.3 (5.0 preferable)/MS-Windows 3.0 or 3.1\*\*.

2 MB RAM (4 MB recommended)

40 MB harddisk and 3 1/4" disk drive.

VGA graphic display and adapter card.

Serial or parallel interface printer.

Use of mouse.

One RS 232 interface for connection to Alcatel PABX'S.

\* Registered trademark of IBM International Business Corporation.

\*\* Registered trademark of MICROSOFT Corporation.

\*\*\* Depending on country.



## A fully compatible system

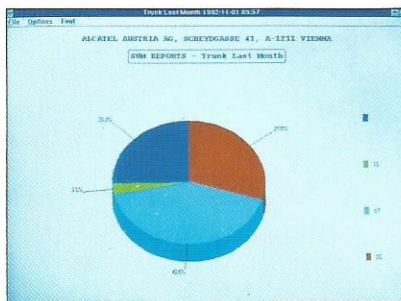
The Alcatel 4713 software operates on any IBM PC 386 (or 486) microcomputer. It is the coming together of high telecom technology and an international computer standard.

Result :

You don't change your habits or your existing PC.

## Alcatel 4713 goes hand in hand with your development

- The organization of your company changes :  
Company, Division, Department, the software integrates the organisation map of your company.



- You progress daily :

When you begin to use Alcatel 4713 you can print charge reports immediately :

Alcatel 4713 sets all of the values for you if none are set by you.

Then, in terms of your personal development, you go on to "Expert" mode and begin to customise your reports or create new ones.

- Your needs change :

There are two releases of Alcatel 4713 :

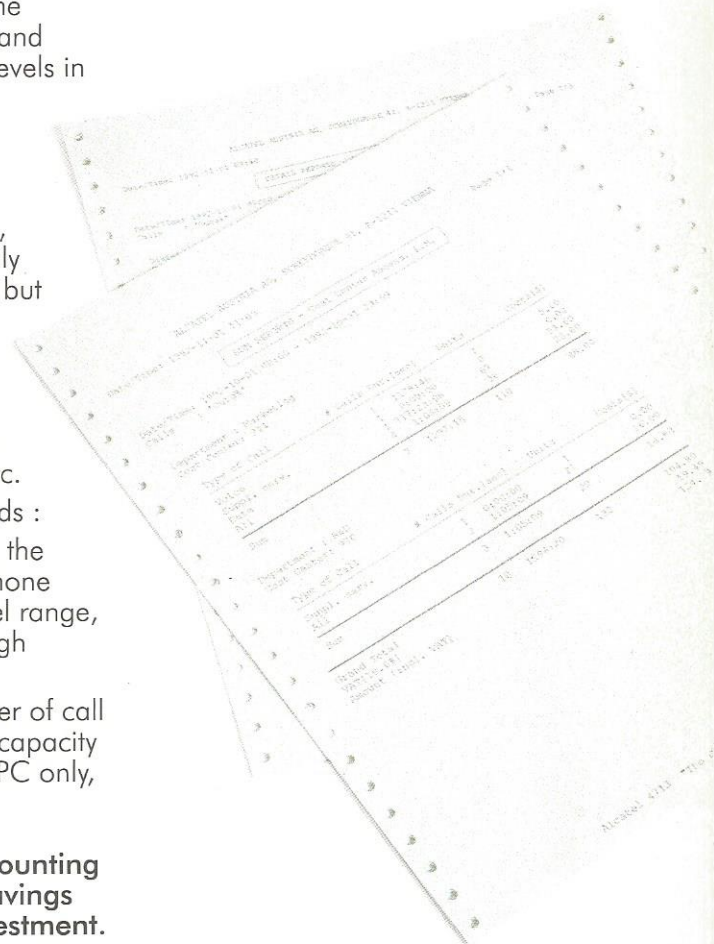
- The "Advanced" level which allows you to create/print all of the basic reports for the previous month, sum and detailed reports at 4 levels in the hierarchical structure, "hitlists" and reports according to various criteria.
- The "Comfort" release, which provides not only graphic presentations but also automatic printing, annual reports, management of your telephone traffic, fully customised reports, etc.

- Your company expands :

Alcatel 4713 can assist the evolution of your telephone system within the Alcatel range, with which it offers a high degree of integration.

Furthermore, the number of call tickets is limited by the capacity of the hard disk or the PC only, not by the system itself.

**The Alcatel 4713 accounting system guarantees savings and secures your investment.**







Alcatel Business Systems International  
Postal address: 54, avenue Jean Jaurès - 92707 Colombes Cedex - France  
Tel.: 33 (1) 47 69 47 69

Headquarters: 12, rue de la Baume - 75008 Paris - France  
S.A. au capital de 737 425 100 F - R.C.S. Paris B 602 033 185